



Office of the Ohio Consumers' Counsel

Your Residential Utility Consumer Advocate

HISTORICAL RATE CHART

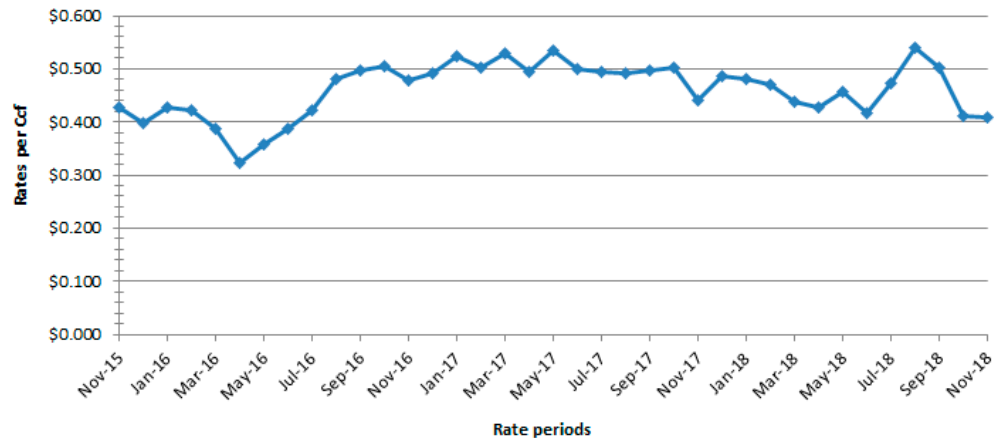
UPDATED: Nov-18
This publication is updated monthly.

Office of the Ohio Consumers' Counsel
65 East State Street
7th Floor, Columbus, OH
43215-4213

E-MAIL:
occ@occ.ohio.gov

WEBSITE:
www.occ.ohio.gov

DUKE ENERGY OHIO: HISTORICAL NATURAL GAS RATES



About these charts

These charts were created to provide Duke Energy Ohio customers with historical information about the company's natural gas rates.

Duke's gas cost recovery rate (GCR) is filed each month at the Public Utilities Commission of Ohio (PUCO). The GCR is the rate customers pay for the commodity of natural gas if they continue to purchase their gas supply through Duke.

Historical rates per Ccf

09/01/15	\$0.476	10/01/16	\$0.506	11/01/17	\$0.442
10/01/15	\$0.477	11/01/16	\$0.478	12/01/17	\$0.488
11/01/15	\$0.426	12/01/16	\$0.492	01/01/18	\$0.481
12/01/15	\$0.398	01/01/17	\$0.525	02/01/18	\$0.470
01/01/16	\$0.427	02/01/17	\$0.502	03/01/18	\$0.439
02/01/16	\$0.423	03/01/17	\$0.530	04/01/18	\$0.427
03/01/16	\$0.388	04/01/17	\$0.494	05/01/18	\$0.457
04/01/16	\$0.323	05/01/17	\$0.534	06/01/18	\$0.416
05/01/16	\$0.357	06/01/17	\$0.499	07/01/18	\$0.472
06/01/16	\$0.388	07/01/17	\$0.493	08/01/18	\$0.541
07/01/16	\$0.421	08/01/17	\$0.493	09/01/18	\$0.502
08/01/16	\$0.481	09/01/17	\$0.496	10/01/18	\$0.412
09/01/16	\$0.497	10/01/17	\$0.501	11/01/18	\$0.408